



- *New ISPE President*
- *Visit SPATEX 2023*
- *ISPE 2023 Sponsor Board*



Our account customers don't get a salesman, they get an expert.

Unlike most other wet leisure distributors, our account managers have a field of expertise, not a region.

Simon here specialises in heat pumps. He can tell you which brand will be best for your installation, what size it should be and how best to install it. Only then will he sell it to you.

Account customers are looked after by a manager who is most appropriate to their business, but all of our experts are on hand to give you the technical support and advice that you need.

Call any of our customer service team on 01271 378 100 and tell them what's important for you today.



Phone: +44 (0) 1271 378 100 | Web: www.goldenc.com



COUNCIL OF MANAGEMENT

Officers of the Council

President

JIMMY LAMB

Immediate Past-President

PHILIP BARLOW

Honorary Treasurer

IAN BETTS

Company Secretary

CHRIS CARR

Elected Members of the Council

WILL DANDO

COLIN DAY

HOWARD GOSLING

COLIN JENKINSON

BOB JUDD

SHAUN KEAY

ALEX KEMSLEY

KIM MUMFORD

JOHN SCOTT

MALCOLM SHARP

BEN STUDDY

General Secretary

ROSS ALCOCK

**The Institute of Swimming Pool
Engineers Limited,
P.O. Box 3083,**

Norwich,

Norfolk NR6 7YL

Tel: 01603 499 959

www.ispe.co.uk

email: ross@ispe.co.uk

NOTICE TO ALL READERS

Articles and advice in the ISPE Magazine are for guidance only. Further professional advice should always be sought before acting upon, or refraining from acting upon, a course of action. Health & Safety is of paramount importance and the correct PPE (personal protective equipment) should always be utilised before undertaking any job.

If in doubt, ASK!

© ISPE. The Institute of Swimming Pool Engineers accepts no responsibility whatsoever in respect of any advertisements appearing herein, or for any opinion or statement expressed in technical articles, correspondence or other items.

INDEX

Front Cover Picture Story	2
ISPE Back-to-Basics Seminar and Filtration Workshop	3
Visit SPATEX 2023	4
Shock Dosing, What Is It?	7
Project Profile - Indoor Pool in Mauritius by Audax Ltd.	8
126 th ISPE One-Day Seminar Report - Climate Control Systems	9
New ISPE President and 2022 ISPE Awards	12
Product Profile - <i>Certikin's Smart Pool</i>	15
ISPE 2023 Sponsor Board	16/17
Obituary - Patricia Carr	18
Introducing... Three New ISPE Council Members	19
Product Profile - <i>MSI's Vac-Alert</i>	22
Project Profile - American International School - Doha, Qatar	24
ISPE's 42 nd AGM Report	30
Correction and Clarification and Editorial	32

Pool Liners Solar & Winter Covers On-Site Lining

AQUAFLEX

The UK's leading Liner specialists

Aquaflex Limited
1 Edison Road, Churchfields Industrial Estate
Salisbury, Wiltshire, SP2 7NU

Tel: 01722 328 873 Fax: 01722 413 068
www.aquaflex.co.uk

Facebook icon Twitter icon

Front Cover Picture Story

We were contacted to provide a refurbishment to an old school outdoor pool. The main contractor had the task of reducing the pool depth and rebuilding a suitable plant room building. The remit for RG Pools was to reconfigure the skimmers and drains and associated pipework and to replace all the plant for the pool. We were also to provide a GRP lining system and look at how the pool would be heated, and a dosing system.

The pool size is 19m x 9m and a flow rate of 100m³ was required, so we installed two Praga 1.6m filters with manhole access, eight Supa skimmers at 10m/h each, two sump drains and four x 3" returns. New pipe suction and delivery to and from the new plant room with skimmers at 4" pipe joining into 6" pipe and main drains capable of 50m³/h. Also fitted was the return 5" pipe, split into two at the shallow end, and two in the deep end, and two vacuum lines at 2". The pumps are 4kw, 3-phase maxim pumps with two duty and one standby.



The pool had previously been heated via solar panels but it was decided that air source heat pumps would provide the best solution for the season of the pool use and would be more economical to run compared with oil or gas boilers. Therefore, two Calorex heat pumps were installed.

The dosing system selected was an Ezetrol Touch for ease of use by the maintenance team on site using Sodium Hypochlorite as the disinfectant. PAC dosing was also installed to ensure the best water quality and to bring the pool to correct commercial standards.

The pool was completed with two new ladders and a heat retention cover with a 10m motorised reel.

The work was completed over the winter months for minimal disruption for the client. Pool refurbishment jobs where we are able to design and bring plant up to correct standards is the most satisfying type of project work for us. The engineers enjoy starting from scratch to create a more efficient and safer pool for the customer. It is great to see the pool in use and the customer able to operate it with no issues.

RG Pools and Leisure Ltd. specialise in commercial pool servicing, maintenance and refurbishment and we pride ourselves on our high levels of customer service and engagement.

Contact: Russell Green
RG Pools and Leisure Ltd
01579 340200



The ISPE Back-to-Basics/Revision Seminar Tuesday 21st February 2023

at
The Hilton Hotel, Cobham, Surrey KT11 1EW

Free to ISPE Students

ISPE Members (all other categories) £25 and non-members are welcome too at £30.

This seminar is aimed at those students about to sit their ISPE Student Exams (held each March), and will include tips and advice on where marks are gained or lost, past papers and samples of good and bad answers.

Typical Sample Programme

(Programme timings are subject to change)

10.30 am	Welcome - Chris Carr, FISPE
10.35 am	Filtration - Chris Carr, FISPE
11.20 am	Questions/Discussion
11.30 am	Construction - Ian Betts, FISPE
12.15 pm	Questions/Discussion Short Break/Lunch
1.20 pm	Chemicals and Water Treatment - Colin Day, FISPE
2.05 pm	Questions/Discussion
2.20 pm	Heating - John Scott, FISPE
3.05 pm	Questions and Open Forum
3.25 pm	Close - Ian Betts, FISPE

Places MUST be pre-booked.

To book your place, please email ross@ispe.co.uk or tel. 01603 499959.

The ISPE Filtration Workshop

The ISPE Filtration Workshop took place in November at Plastipack's premises in St. Leonards-on-Sea, East Sussex. ISPE past-Presidents Chris Carr, FISPE and Philip Barlow, FISPE ran the day with assistance from ISPE Council member, Kim Mumford, MISPE.

A report will appear in the next issue of the ISPE Magazine but in the meantime we would like to thank the following companies and individuals for their invaluable help in making the day a success:

- PLASTIPACK: For allowing us to use their premises - Peter Adlington, FISPE, Tim Fielder and all staff.
- PLASTICA: For supplying all the pipe-work (for the Trade Test) - Edward Campbell-Salmon, FISPE and Pat Delaney.
- MSI: For sponsoring the lunch & supplying Jolly Gel - Bob Kent, FISPE.
- CPC: For supplying gift bags (towels, playing cards, inflatable ball) - Mark Ramsden, MISPE.
- PPG UK & IRELAND: For funding the winner's Champagne - Jimmy Lamb, FISPE (Note: The winner was Jim Morrison, MISPE – Roman Pools Ltd.)
- WATERCO: For providing printed documents - Tony Fisher and Darren Watson.

The next ISPE Filtration Workshop is scheduled to take place in November 2023, for more details and to register your interest, please contact the ISPE office.

Visit SPATEX 2023 for a fresh take on water leisure



As the New Year dawns, the water leisure industry is buzzing in anticipation for the launch of the forthcoming SPATEX 2023 exhibition from Tuesday 31st January to Thursday February 2nd. With 19 new companies, at the time of going to print, making their debut at the Coventry Building Society Arena, exhibiting alongside all the familiar leading names in the industry, you can be assured of a host of new launches and innovations. Visit and see your world through new eyes.

It's all about NEW

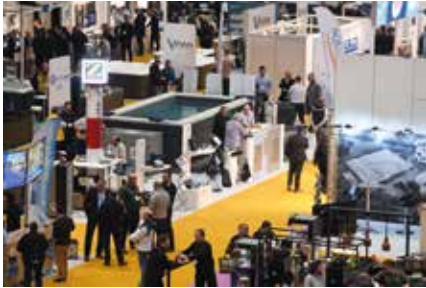
You won't find a more comprehensive and varied line up of the international water leisure industry anywhere in the UK. Exhibiting companies, representing 11 countries - Belgium, Czech Republic, Denmark, France, Germany, Hungary, Turkey, Netherlands, Spain and USA - will join the strong UK contingent under the convenience of one roof.

With free admission and free car parking, a visit to the show will pay dividends for the knowledge gleaned. Swimming pools, plus swim spas, steam rooms, saunas and enclosures and all the peripheral equipment, such as chemicals, heating and ventilation and lighting will feature. Indeed, over a third of exhibitors are spa-related companies. Ten of the displays (seven spas, one swimspa and two pools) will be filled with water so you can see them in operation. New launches include heat pumps, pool covers, a container swimming pool, epoxy resin floors, gazebos, panel pool and rapid test kits – to name but a few.

Save, save, save!

It's not only the host of exclusive show discounts, competitions and offers that make a visit worthwhile, you can see, touch and discuss all the latest energy and money saving innovations in both the new Product Zone and on the hundred plus

stands. Put simply, this is a show you can't afford to miss.



Invest in yourself

SPATEX 2023 will continue the tradition of providing the UK industry's best source of FREE education and training with a double seminar programme led by leading industry experts. The ISPE (Institute of Swimming Pool Engineers) will be running its very popular, CPD-accredited Technical Workshops. They offer all the latest

insights and tools the industry has to offer plus the latest standards and guidance.

Join us for the industry's biggest networking event: Visitors and exhibitors are invited to attend the SPATEX Networking Event in the Arena's Clubhouse Bar on the Wednesday, after the show closes, for free canapes and drinks. This year promises to offer something a little different!

Need pointing in the right direction? Pop into the SPATEX Help and Technical Desk at the entrance to the Exhibition Hall.

Registration is FREE at

www.spatex.co.uk

For more info:

helen@spatex.co.uk

Tel: +44 (0) 1264 358558.

ARGONAUT[®] PUMP

The Plastica Argonaut[®] Pump has been designed and engineered to succeed the rest. A superior build quality ensures performance durability and reliability.



Plastica

The UK's Leading Independent
Swimming Pool Manufacturer and Distributor

☎ 01424 857802 ✉ orders@plasticapools.net 🌐 www.plasticapools.net

Give us a follow...



Swimming Pool Scene

THE VOICE OF THE INDUSTRY

SWITCHING TO SUBSCRIPTION-ONLY!

The biggest print, on-line and social media audiences

**THE ONLY MAGAZINE
REACHING BOTH
COMMERCIAL AND
RESIDENTIAL MARKETS**

Unrivalled readership in the UK and Globally



EXCLUSIVE UK
REPRESENTATIVE
FOR THE POOL &
SPA ALLIANCE



THE NUMBER
ONE READ FOR
THE UK WATER
LEISURE SECTOR



EXCLUSIVE
AND INCISIVE
ARTICLES AND
FEATURES

ENSURE YOU CONTINUE TO RECEIVE YOUR COPY AND

SUBSCRIBE ONLINE

www.poolandspascene.com

Shock Dosing, What Is It?

A summary of a presentation ('Shock Treatment for Spas - Why and How') given by Shanaz Patel of CPC, as part of the ISPE Workshop programme at SPATEX 2022.

You may have heard it called a shock dose, super chlorination, party shock or oxidising. If we are going to get a little technical, "shock dosing" is adding an oxidiser to the water. The oxidiser's role is to affect the electrons of the impurities in the water and start to break them down.

The aim is to treat (oxidise) the organic contaminants that have built up over time or are present in the water from heavy use.

HSG282 views shocking a hot tub as a necessary stage in the treatment of leisure water to help maintain water safety and cleanliness.

So why shock dose?

1. Water safety - Help maintain water safety. When an oxidiser breaks down bather impurities, the primary sanitiser is free to kill bacteria.

Your primary sanitiser will contend with bather impurities and bacteria but added contamination can put pressure on the process.

2. Water Clarity / efficiency - Adding an oxidiser routinely helps to manage bather impurities that could lead to water problems, including clouding and unpleasant odours.

When to shock dose?

Hot tub usage and bather load is different for everyone, so we need to consider these factors when deciding on our routine:

- Best practice - shock dosing weekly helps to control bather impurities and maintain your water quality. As mentioned before, this process will support your primary sanitiser.
- After heavy use - bathers introduce impurities into the water, the more bathers, the higher the rate of contamination – as always, prevention is better than cure.

What are my options?

- There are many products available for shocking a spa or hot tub and we would recommend a discussion with your local supplier who can advise on the pros and cons of the various options.

With thanks to Shanaz Patel and Complete Pool Controls - www.cpc-chemicals.co.uk

Competition Result

In the last ISPE Magazine (October 2022, Vol. 33, No. 3, - p22) there were two old postcard pictures, and we asked readers to identify their locations.

ISPE Member John Taylor kindly supplied the pictures and offered a prize of £50 for the first correct entry.

The answers were:

1. Cliftonville, Margate, Kent
2. Bude, Cornwall

The winner was Dave Bretherton, TnISPE(Cert.) from PPG UK & Ireland.

Many thanks to John Taylor.

Project Profile

Indoor Pool In Mauritius by Audax Ltd.

Audax Ltd was awarded the tender for the complete refurbishment of an indoor swimming pool at SBM Park (State Bank of Mauritius) at La Vigie, Curepipe, Mauritius.



The existing pool dimensions were 18m by 10m wide with an estimated volume of 300,000 litres, 300m³.



The pool had a peripheral drain channel collecting spill-over water which was directed to a ballast tank built in the technical room.

The scope of work was to:

1. Build new ballast tank externally in reinforced concrete.
2. Clean pool tiling, redo joints, clean peripheral drain, replace drain cover, pool edge tiling.

3. Replace underwater lighting.
4. Replace all filtration equipment, piping, valves, etc.
5. Install new control panel, new wiring, etc., as per Engineer request.
6. Replace existing gas heaters with heat pumps.
7. Hydraulic design associated with filtration.
8. Streamline the complete installation.



The refurbished pool and M&E equipment was commissioned on the 4th August 2022 and open to the bank VIP clients on the 6th August 2022. Please note that all equipment installed is from Certikin U.K.



**Patrick Rey, MISPE, Director -
Audax Ltd.**
<http://audax.mu/>

126th ISPE One-Day Seminar Report - 'Swimming Pool Climate Control Systems'

We are grateful to John Harvey and Martin Killen from Recotherm, who spoke at the ISPE Seminar in Weybridge, Surrey in October 2022 and kindly supplied the following summary. Copies of their full presentation may be obtained from the ISPE office, on request.

Introduction: Established in 1985, Recotherm are a British Company with qualified design engineers. They are specialists in pools only and a leading player in M&E and the specified market place. They are also now a growing provider to the pool trade and supply their systems to leisure centres, hotels & spa resorts, schools and domestic customers. They have directly employed surveyors, designers, build teams and service engineers.

The key functions of the units are to control pool hall humidity, to prevent corrosion & damage as well as to provide air heating, fresh air and to regulate air flow. They can control water heating (if required and provide various control functions, e.g. pool cover link, fire alarm link etc.).

Pool room conditions occur because pool water continually evaporates which causes high humidity (60% relative humidity typical set point) and failure to control will quickly result in serious structural damage, and chlorine content adds to this.

Old styles of control are 'total loss' (an extract fan and supply fan) or 'limited heat recovery' (plastic recuperators or air mixing).

The modern solution is controlled 'fresh air ventilation' with advanced heat recovery or refrigerant-based dehumidifiers

Pool hall humidity and the consequences



Many injuries were caused when the roof of this swimming pool collapsed due to chlorine damage, caused by inadequate & incorrect air supply & distribution.

Pool halls are one area that you **must** design & supply the right amount of air, at the required temperature, to all the necessary parts



Engineering Excellence



LONDON
SWIMMING POOL
COMPANY



30
YEARS

Specialising in below ground and moving floor pools. Services include consultancy and design, custom pool plant and water treatment.

020 8605 1255 www.londonswimmingpools.com

Unit 1, Shannon Commercial Centre, New Malden KT3 4PT

of the building to prevent aggressive condensate forming.

Design conditions and considerations

Pool water temperature is typically 27°C to 31°C, Spa Water temperature is typically 34°C to 37°C and relative humidity at 60%.

Evaporation adds to high energy loss and costs so air temperatures are traditionally 27°C to 31°C for comfort and to reduce evaporation. They are usually, but DO NOT have to be, 1°C above water temperature (but that is a whole different discussion!). Remember, the air temps are not to be above the spa temp or you will all pass out!

Other project design considerations include, plant rooms, unit placement, positioning and internal ducting, building insulation, glazing, roof/sky lights, air distribution (ducting and grilles), noise, high water tables, negative air pressures, cold bridging (RSJ's, door handles etc.), vapour barriers, building materials, timber treatment, gyms and equipment and LPHW flow and return temperatures (this brings in a whole new subject, again worthy of a discussion on its own, being Boilers vs Heat Pumps). All in all, looking at the above list, it's fair to say there are many aspects you have to take into consideration!

Ventilation System Options

There are a number of solutions available with the controlled heat recovery fresh air system and the refrigerant recirculation system being the two main ones in use. Crossover /combination systems are also reasonably common.

Total Loss and limited (plastic) heat recovery is thankfully almost obsolete.

Fresh Air Heat Recovery systems have been long specified in the commercial and M&E & Consultancy sector along with some specialist (thermal wheel, etc.) applications and are now making huge inroads into the pool trade.

Refrigerant re-circulation systems are/were most common in the pool trade until the last few years (distributor led?).

Images were then shown with airflow generic of a typical pool hall, plus images of different shape options of the units and 20-30 configuration options, plus specials, bespoke and commercials.



The importance of efficiency

Saving money and reducing carbon footprint through efficient technology is critical in these energy-conscious times. It is fair to say that fresh air ventilation has always provided a better or nicer atmosphere in the pool hall than constantly recycled air. It used to be perceived as being more expensive to operate with total loss and plastic recuperators, but with high level control and monitoring, the advent of full inverter fans, modern controls and heat reclamation via efficient metal plate heat exchangers, new units are now considered by many (but not all) to be far more economical than refrigerant-based dehumidifiers.

Fresh air intake for dehumidification gives a fresher feel, provides Covid reassurance and protects the environment. (No leaking of R407C global warming refrigerant gasses!!)

Positive project system features to consider

A good system should have a fully functioning BEMS (Building Energy Management System) which means it will always be operating at its peak performance, utilising scroll-less full inverter-controlled fans that give greater efficiency, that are fully modulating (not twin speed). Fully modulating dampers, fully modulating heating valves, and sensors on the return air, monitor and control the speed of the fans, heating valves and the dampers to ensure that the precise amount of energy is used to maintain the pool hall control.

Touch screen interfaces have been standard for over 15 years and give the end user or engineer an easy interface to control the functions of the unit.



These include visible fault warning and operational mode indications, together with air temperature and humidity display and adjustment. Remote access options are available.

Finally, consider having double panel build and insulated units so cold plant rooms don't lose energy or hot rooms don't affect readings and performance via single skin.

It is also worth noting from a practical perspective for those difficult site conditions that flat pack delivery and build-on-site options are available.

**With thanks to Recotherm
www.recotherm.co.uk**

A large advertisement for Staxil Ltd. The background is a vibrant blue image of water splashing, with many droplets frozen in time. At the top left, the company name 'STAXIL LTD' is written in large, bold, white letters with a blue outline. Below it, the text 'Suppliers to the Swimming Pool Industry for over 40 years' is written in a smaller white font. In the top right corner, a blue box contains the text 'EST. 1975'. On the right side, there are four logos stacked vertically: 'Certikin' in blue, 'BADU' with a green swirl icon, 'V-1' in red, and 'SKL' with 'SWIMMING POOL' below it. At the bottom left, a blue box contains the contact information: 'Unit 8 Borers Yard, Copthorne, West Sussex RH10 3LH', 'Telephone: 01342 859198', and 'Email: info@staxil.co.uk'. At the bottom right, there is a small circular logo for 'SPATA'.

New ISPE President and 2022 ISPE Awards

At the Institute's 126th One-Day Seminar, held in Weybridge, Surrey, in October 2022, outgoing ISPE President Philip Barlow, FISPE, handed over the ISPE Chain of Office to new ISPE President, Jimmy Lamb, FISPE.



Philip Barlow, FISPE

Jimmy is the first ISPE President to have had his father also hold the office (John Lamb, ISPE President 1992-94).

ISPE 2022 Awards

Jimmy's first duty as President was to conduct the ISPE awards and he presented Philip Barlow with a gold ISPE lapel badge signifying that Philip is now an ISPE Past-President.

Jimmy went on to present Technician certificates to the newly qualified ISPE Technicians who had passed their ISPE exams in 2022.

The Gatside Cup is presented to the Student of the Year, the student who achieved the highest overall marks in their ISPE

exams, and Jimmy presented the Gatside Cup to the winner, Heather Brigden-McLean from SCP UK Ltd.



Jimmy congratulates Heather

The Jim Johnson Filtration Shield for the best Filtration exam paper was won by Kieran MacDonald from Cheshire Wellness, although unfortunately Kieran was unable to be present.

Jimmy announced that the Bob Kent (MSI) Cup for the best Heating exam paper had been won by Dave Bretherton from PPG UK & Ireland, and Jimmy presented Dave with the cup and congratulated him.



Jimmy with Dave Bretherton

The final award of the day was for the Peter Horne Memorial Cup for the best Chemicals exam paper and the winner was announced as Adam Hudson from Grayfox Pools who, unfortunately,

was unable to be present. Jimmy said that Adam had scored an amazing 97% in his Chemicals Exam and congratulated Adam in his absence.

New ISPE Certified Technicians

Congratulations to all the winners and to all those listed below who passed their ISPE exams in 2022 and become ISPE Certified Technicians:

- James Beaton - Penney Technical Services Ltd.
- Tyler Bello - Guncast Swimming Pools Ltd.
- Dave Bretherton - PPG UK and Ireland
- Heather Brigden-McLean - SCP UK Ltd.
- Ryan Burns - Grayfox Swimming Pools Ltd.
- Sean Clouter - Harlequin Swimming Pools Ltd.
- Lee Dodd - Cheshire Wellness
- Sam Gunter - Harlequin Swimming Pools
- Lee Haynes - Rockingham Swimming Pools Ltd.
- Jess Holt - SCP (UK) Ltd.
- Adam Hudson - Grayfox Swimming Pools Ltd.
- Julian Lloyd - All Swim Ltd.
- Alex Miron - PPG UK and Ireland
- Nick Pagett - Plastica Ltd.
- Max Popek - Guncast Swimming Pools Ltd.
- Ryan Shadbolt - Neuman Aqua Ltd.
- Ian Skinner - London Swimming Pool Co. Servicing
- Scott Smith - Rod Hudson Pools
- Matt Sylvester - Alan Bettin Swimming Pools Ltd.
- Ryan Wells - Plastica Ltd.



TAILORED SOLUTIONS FOR YOUR SWIMMING POOL PROJECT

HEAT PUMPS | DEHUMIDIFIERS | AIR HANDLING UNITS



t. 01621 856611 | e. sales.pool-commercial@dantherm.com | danthermgroup.com

DANTHERM GROUP

DON'T MISS OUT ON YOUR OWN COPY OF

SPN

www.swimmingpoolnews.co.uk

OFFICIAL MAGAZINE FOR THE UK INDUSTRY



An annual subscription to **SPN** costs just £30 (UK) - and represents terrific value for the most respected and established title in the industry.

Every issue of **SPN** is packed full of essential information from the UK and global pool and spa industry - **can you afford not to have your own copy?**

SUBSCRIBE NOW AND YOU WILL:

- Never miss an issue
- Pay no charge for post and packaging (UK)
- Have your own copy delivered direct to your door (home or office)
- Benefit from our satisfaction guarantee - your money back for any unmailed issues
- Receive your copy at least a week before our 'virtual' edition goes live

SUBSCRIBING TO SPN COULDN'T BE EASIER...

Just visit our website at www.swimmingpoolnews.co.uk and click on any of the 'subscription' links. You can pay online with any major credit card using our secure PayPal checkout - it'll only take a couple of minutes!

Your SPN contacts are:

For editorial enquiries contact Jon Wadeson on 020 8306 8150 or email jon@aquapublishing.co.uk
For advertising enquiries contact Tony Weston on 01474 813433 or email tony@aquapublishing.co.uk



Product Profile

The ultimate in automated control of pool equipment

Certikin's Smart Pool is the ultimate in the automated control of pool equipment and operational processes. This pioneering system can be customised to suit all brands of pool equipment and applications, providing the effortless control of heating, filtration, lighting, dosing, the pool cover and much more. Total peace of mind for the pool owner.



Designed and manufactured in the UK, Smart Pool offers its comprehensive array of control, monitoring and reporting functions via a mobile (Apple IOS and Android), tablet or PC. It has the option of an additional touch screen on a 'central control hub' and is Amazon Alexa-enabled for many functions. Easy to install and connect, it's intuitive to use and can even co-ordinate equipment operation with local weather forecasting for maximum efficiency.

Specific key features include manual or timer control of pump, heating, lights, cover (open only) and UV; manual or automated dosing to manage pH and ORP; monitoring and reporting of temperature, flow state, pressure,

pH and ORP; three additional open auxiliaries are available for feature control (such as garden lights or swim jets); sunset activation to operate cover and lights etc; and, such is the level of its smartness, it can be configured to automatically order acid and chlorine for you! In addition, Smart Pool creates a 300-hour history of pool parameters.

The package comprises the Smart Pool hub unit, cable glands for the box, installation and user manual, temperature sensor, cable for pressure switch, flow switch and 2.5mm jumper cables.

Certikin T: 01993 777200
www.certikin.co.uk

LEAK DETECTION & PRESSURE TESTING

EQUIPMENT HIRE AND
SALES
COMPREHENSIVE ON-SITE
SERVICE

'Phone for free Leak Detector!'

UNIPOOLS LTD
621 Watford Way
Mill Hill
London NW7 3JN
Tel: 020 8959 8686
Fax: 020 8959 2037



The Institute's Home
for 2023 is kindly

POOL CONSULT



HOT TUB & SWIM SPA SCENE

Study Course and Programme of Education
sponsored by the following Companies:



Test All Water



PLASTIPACK LIMITED™
© Plastipack Ltd

 Golden Coast
Stronger with PPG UK *Member* Pollet Pool Group

 FAIRLOCKS
POOL PRODUCTS

SWIMMING POOL SCENE



LSPS Luton Swimming Pool Supplies

MCINTYRE
Leisure Services



Leisure Safety Training Ltd

 *Plastica*

WHAT POOL
& HOTTUB

HYDROSPEC
SWIMMING POOL ENGINEERS

Obituary

Patricia Carr - 5th September 1935 - 30th November 2022

We were very sad to hear that Patricia Carr passed away during the evening of 30th November 2022 after a short stay in hospital.

Tricia, as she was known to many, was born on 5th September 1935, and was a very well-known character in the pool industry, starting as the Company Secretary for Lacron Ltd., in 1970 and then becoming the Managing Director when her husband, Tony Carr died in 1979.

At the helm of Lacron, Tricia conducted business all over the world, from Japan in the East to the USA in the West, and many other countries in between. Tricia earned enormous respect from those in the pool industry and her list of business contacts was extensive. Many people in the pool trade knew Tricia for her keen eye for detail and her business acumen.



Tricia met the Queen Mother at The Ideal Home Exhibition in 1987

Tricia was a Member of the ISPE for many years and the first lady President of SPATA in 1994/5, and attended many of the SPATA Past-President Dinners in the following years.

Tricia was also the mother of five children, including Maria (Gabriel), and Chris Carr, who followed her into the pool industry. Over the years Tricia assisted and supported various charities as well as The Territorial Army and her local hospital in Sittingbourne.

Tricia had a keen interest in her local church after she retired in 2002, and her funeral was held at the church in which she was so heavily involved for many years, St. Margaret of Antioch, Lower Halstow, Sittingbourne, Kent, on Friday 6th January, 2023. The service was followed by a 'Celebration of Patricia's Life' at The Coniston Hotel, in Sittingbourne, Kent, where many tales of Patricia's rich life were remembered with fondness.

Introducing..... Three New ISPE Council Members

At the October AGM, three Institute members were elected to serve on the ISPE Council of Management: Colin Jenkinson, MISPE, Shaun Keay, MISPE and Alex Kemsley, MISPE.

For those of you who may not be familiar with them, here's a little bit about each of them.

Colin Jenkinson

I joined ISPE as a Member in March 2009 and this is not my first time on the ISPE Council having previously been elected between 2013 and 2018, choosing not to stand for re-election in 2018 to ensure all members have the opportunity to stand and contribute to the Institute.



Colin Jenkinson, MISPE

Having been elected once more I am keen to support the Institute in the changing and challenging times ahead.

In my role with ISPE previously I contributed to the promotion of ISPE within the industry, widening the opportunities for members to attend workshops and seminars and assisted in the introduction of the ISPE Continuous Professional Development (CPD) Scheme in 2017. I am an advocate for those in the industry maintaining their knowledge and developing new skills and as such I hope to develop this further during this term on the Council.

I have a health and safety background and am currently Secretary

of IOSH East Midlands Branch having previously spent terms as Chair and Treasurer.

I started my career in the swimming pool industry, working as a Lifeguard at the Water Place, Bolton (now closed) whilst completing a Business & Leisure Management degree course at the University of Manchester. Having graduated, I continued to work in the industry undertaking operations and management roles in both the local authority and private health club sectors.

In 2001, I set up my own training and consultancy business. Over the years this business has expanded and I am currently Director of Leisure Safety Training Ltd., working with a number of clients in a consultancy role as well as delivering pool plant training courses across the UK, including ISPE-Endorsed PPO training.

I hope to use this term to encourage more pool, spa and hot tub engineers to regularly attend industry workshops, seminars and themselves stand for election to Council.

Colin Jenkinson MISPE

Shaun Keay

For those who do not know me, my name is Shaun Keay from Lew Keay and Sons. We are a small family run swimming pool / engineering business of 75 years standing. We originally started working within the steam sector in 1947 and quickly moved over into swimming pools shortly after.

The company has passed down from my granddad to my uncles and father, now to me.

I have studied in a time-served approach in swimming pools, on the tools of pipe fitting/threading, filter &

pumps installations, welding, paints, bacterial analysis, above-ground pool construction, liners and covers.



Shaun Keay, MISPE

We specialise in the commercial division of the hydrotherapy swimming pool market, and we currently are running several large hydro pools within our region and have several large commercial pools that we regularly visit.

We help our customers with all sorts of pool-related problems, from day-to-day running problems to installation of equipment and the importance of record keeping within the commercial sector and the correct way of water testing /analysis and the importance of bacterial testing.

I am a hands-on engineer and work out on the tools daily, and will often give advice and help to those who just want advice over the phone. Whilst I do not know all the answers to all pool-related problems, I will always try and help to find a sensible solution to resolve the issue.

My interests outside of the swimming pool industry include playing pool and football, kayaking and the odd bit of surfing and bodyboarding, when I get chance, down in Cornwall or Devon whilst on holiday with family. I also like motorcycles and I am known to get stuck into the odd mechanical project, cars, motorbikes, jet boards, etc.

I look forward to working with the ISPE Council and meeting other ISPE members, and I do hope that I can offer some of my experience that I have learnt to others.

Shaun Keay, MISPE

Alex Kemsley

I started in the hot tub and pool industry at the tender age of 22 in my second year of university hiring hot tubs out to students. While studying at university for a Business & Economics degree I was also training in the RAF to be a helicopter pilot. When university came to an end there was a tough decision to make, fly or go into business, and business won.

Using what was left of my student loan, my friend from university Simon Dickson and I imported a container of hot tubs, bought a van and travelled round the UK selling them from county shows. The business quickly grew and we opened our first showroom in West Sussex in 2008, just before the financial crisis. We traded successfully through this period.



Alex Kemsley, MISPE

I soon became involved in BISHTA and joined the board, quickly ascending the ranks to become the youngest ever Chairman, quickly followed by my development to the BSPF and ultimately BSPF President at the age of 33.

We were approached in 2011 by Compass Europe, off the back of our success in the hot tub industry. The one piece pool industry was in its infancy and we knew we could apply what we had learned in the hot tub industry to pools.

10 years later we stand as the largest pool builder in the UK having installed over 500 pools.

Alex Kemsley, MISPE.

LOOKING TO

KICKSTART

YOUR CAREER?

Luxury Pool Builders, Compass Pools, are looking for new members to join their team nationwide.

Are You:

Hardworking and enthusiastic

Looking to learn new skills and work with the best

Career driven and focused on the quality of your work

... If so, we want to hear from you

Current Vacancies:

- Design Consultant
- Apprentice Engineer
- Service Engineer
- Installation Engineers
- Office Administrator

If you would like to join us, please visit:

www.compass-pools.co.uk/careers

or email: careers@waterstream.co.uk

**Waterstream, Brooks Green Road,
Coolham, West Sussex RH13 8GB**

COMPASS 
enjoy the moment

Product Profile

VAC-ALERT

POOL ENTRAPMENT - THE SILENT KILLER IN YOUR POOLS

Whether it be a swim in the 66-million-gallon, San Alfonso Del Mar Resort pool, which is longer than nine football pitches, or a relaxing dip in the 24 Carat, gold plated St. Regis Lhasa Resort pool, every hotel strives to offer its guests the ultimate, safe bathing experience. Sadly, in the case of some other hotels, not all guests come away with pleasant memories, and some don't even get to leave with their lives. The sad truth is that despite the headline-making stories of children being seriously injured, or drowned from pool entrapment, many overseas hotels with older pools have yet to make one relatively simple change that could prevent such tragedies.

Pool entrapment most commonly occurs when a bather comes into close contact with a single main drain in a pool or spa and is pulled onto it by the suction of the pump. It is usually children, who do not have the strength of an adult, and are therefore unable to break free from this suction, that are the victims. A recent experiment conducted in the USA revealed that it can take around 225kg of weight to free an object trapped on a single drain. Incidents of pool entrapment are far more common than one might imagine, and multiple hotels around the world have experienced the horror of dealing with such tragedies.

In the UK, new pools are built to comply with BS EN 15288 and SPATA standards, and have two drains fitted, which are arranged so that there is no risk of bathers becoming trapped. If a bather becomes trapped on one drain, the second drain takes over, releasing the pressure on the first drain, thus releasing the bather. However, for those holidaymakers who head abroad for their vacation, chances are that the country they are heading to will not adhere to such safety guidelines, and children may well end up in one of the millions of pools abroad that only have a single drain.

The fact that these types of tragedies still occur is even sadder when you realise that there is a simple solution that has been in common use in some of the leading hotel chains as well as numerous domestic pools for years. And this solution involves far less work than fitting a second drain. Vac-Alert is a non-electrical self-monitoring, low-maintenance safety system, that responds in milliseconds to an increase in pump suction created by an obstruction being held by suction on the main drain, freeing a trapped swimmer from a life-threatening situation. Once triggered, the Vac-Alert's spring-loaded piston reacts quickly, opening to atmosphere and releasing life-threatening system suction.

A list has been published listing over a hundred injuries and, in some cases, fatalities of children in pools from many different countries. Most if not all could have been prevented. Contact Aslade@mineralsi.com for details.

For more information see: www.mineralsi.com.

Is your pool safe?



Fitting a Vac-Alert® Safety System can prevent terrifying pool accidents and bring peace of mind.

SAFETY ADVICE



VGB
Approved

Compliant to
ASMA/ANSI
A112 STANDARD



Fitting an MSI Vac-Alert® Safety System can prevent this type of terrifying incident in your pools and spas and bring you peace of mind.



www.mineralsi.com

T +44 (0)1825 790524

F +44 (0)1825 790908

E sales@mineralsi.com

www.mineralsi.com

Project Profile

American International School - Doha, Qatar 2017 - 2022

By Richard Bishop, MISPE

Back in 2017, the late Allen Wilson, FISPE, invited me to help him with one of his clients in Doha, Qatar. The American International School was looking to have their staff trained on the ISPE-endorsed Pool Plant Managers course and to install a new water treatment system.

Always up for a challenge, and a tour with Allen, we tendered and secured supply of an amperometric free Chlorine and pH control system linked to the internet to permit remote monitoring and enable remote technical support. We always specify amperometric free Chlorine and only install a Redox probe to supplement the water quality measure and not to control the Chlorine residual.

Doha was a City in transformation at the time with large-scale building projects well advanced in preparation for the 2022 Football World Cup. New

football stadiums were being built, some of which were deliberately designed to be dismantled after the World Cup. Tourism was being enhanced with a new Souq shopping and dining area, and several national museums being constructed.

The National Museum of Qatar was designed to look like the natural Desert Rose mineral rock formations found across the region. The Museum of Islamic Art is a stunning example of architectural design, housing some of the most wonderful art in the world as well.

The equipment was sourced from the UK and across Europe, and paperwork clearance was assisted by our local Chamber of Commerce who, as with all our projects, are an invaluable source of guidance and support. If you ever have to work abroad I would strongly recommend contacting them for advice.

Uncompromising Water Disinfection Systems

The Hypolyser® assures safe, clean pool water without using hazardous chemicals. Whether you are looking to disinfect a spa pool or a water park, Gaffey have a Hypolyser® system to meet your needs.



LOW
IMPACT



RELIABLE



SIMPLE
TO USE



ECONOMICAL



LOW
HAZARD



LOW
MAINTENANCE

WWW.GAFFEY.CO.UK

For more information visit gaffey.co.uk
or contact us on 01254 350180 and info@gaffey.co.uk



gaffey
WATER TREATMENT FOR LIFE

Our local Chamber of Commerce also recently organised our up-to-date ATA Carnet documentation for our 'tools of the trade' - a kind of passport or temporary export/import document that enables us to carry our tools into other countries and be exempt from import or VAT charges. It traces the exit of the tools from the UK and across the journey to the project destination and then records the

journey back to prove that they were in effect exported and then re-imported, so any fees, duties or taxes can be nullified and will help avoid expensive tax bills being imposed. This is imperative to have in place now that the UK has left Europe. The key is ensuring each border customs force stamp the correct page and our UK customs border force stamp them correctly as re-imported in full on their return.

With all the paperwork in place and goods safely shipped off to Doha, I travelled to Doha and successfully installed the water treatment system in May 2017.

It was a real pleasure in the 40°C plus heat to have an air conditioned plant room, more comfortable than any I had experienced in the UK and essential in the Middle East.

The school used the system successfully for 5 years, however, the plan for the International School was always to move to a new build school across the city on a green field site.

In 2021, Elmer Singson the Facilities Coordinator at the school contacted me again to help the school safety audit for the new build 25m pool and adjacent learner pool. They were to be built by a local contractor and the school were keen to ensure that international and, in particular, UK and European standards were being observed in the design specification and as the installation was being built.

Following a series of delays as a result of travel restrictions due to Covid 19, I finally travelled to Doha to inspect the new school in August 2022.

Doha had transformed since 2017 and there was already a large presence of advertising for the FIFA World Cup in November. The stadiums were all built ready and a new mono rail travels in a circular route past all the key stadiums and venues. I was sure any fans attending would be well looked after.

Covid 19 restrictions were still present in August with mandatory wearing of masks in public spaces and, of course, the school.



Above and below: Islamic Museum of Art and National Museum in construction





The Original School Pool



New School Pools



Elmer Singson testing the water with his water balance photometer kit



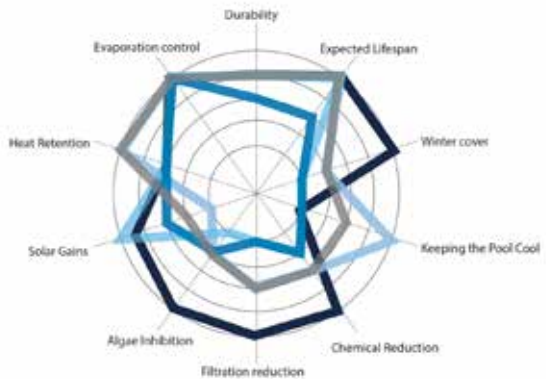
Handover Training

Save Energy.

COVER YOUR POOL.



Offering solutions for every pool need, GeoBubble's Guard Range of products are designed to yield maximum savings in respect of heating or cooling and chemical consumption when covering a swimming pool.



Take a look at our interactive product comparison graph to help you choose the most suitable cover for your needs:

<https://www.geobubble.co.uk/choose-your-cover/>



☎ +44 (0) 1424 851659

✉ info@geobubble.co.uk

The new school has students from 70 plus countries and covers some 60,000 m². The facilities include a 25m swimming pool and learner pool, all-weather athletics track, fitness suite, wellness and warriors suites, all weather football pitch, fully equipped theatre for live performances and a sports cafe. Far more than the muddy fields I endured on the flood plains of the river Wye in Hereford back in the day.

Everything was covered, from the size of the fonts and design of the safety signage, to safety ladder steps and entrances, through to pipe velocity design and as-built performance.

One major change we requested was the installation of accurate flow meters on all filters and by-pass circuits to ensure compliance with effective filtration below 25m³/m²/hr and efficient backwash fluidisation and rinse cleansing at above 35m³/m²/hr and my preference above 40 rate. We come across too many systems installed where the water is passing through the filters too fast and forcing fine

debris through the filter and back to the pool; or backwash rates not sufficient to lift and fluidise the filter media and clean the media of debris and bacteria after a backwash. Both can lead to medium- to long-term issues with the pool water management.

My main task on this visit was to ensure that the design and execution complied with the various industry standards as published by the Pool Water Treatment Advisory Group and British and European Standards.



Richard with two of the school pool operatives

Another common failing is the installation of a single tread step on the entrance ladders which does not comply with BS EN 13451 - 2 : 2015. As of 2015, all ladder treads on commercial pools should be the double tread design, not just the top step. The purpose of this is to prevent leg entrapment and potential leg breaks if a bather falls from the ladder.

As always, it was a pleasure to work with the International School and Dominick Kelly the Facilities Director and Elmer Singson the Facilities Coordinator. We look forward to returning to deliver pool plant training in the future to them and their staff and continuing the legacy Allen started.

Richard Bishop, MISPE
www.aquathermae.co.uk

Reassurance in these testing times
www.cavendishlaboratories.com




WATER TESTING

- Legionella Analysis
- Potable Water Analysis
- Swimming Pool Analysis
- Hygiene Audits

Cavendish LABORATORIES
 01245 422800
info@cavendishlaboratories.com
www.cavendishlaboratories.com
 Millers Barn, The Warren Estate, Lordship Road,
 Writtle, Chelmsford Essex CM1 3WT





IN EXTREME SILENCE
It's an inverter age



BUILT IN WIFI



4 Season Function

LEADERS in Heat Pump Technology & Innovation

The Complete Range of Energy Saving Products



MINI
HEAT PUMP

INVERTER TECHNOLOGY
DEHUMIDIFIER



Tel 01293 546 126 / 01268 273 040
email info.uk@scppool.com



ISPE's 42nd Annual General Meeting Report

The 42nd ISPE AGM took place online via Web-Ex on Thursday 20th October at 9.30 a.m. Newly inaugurated ISPE President Jimmy Lamb, FISPE, chaired the meeting.

Jimmy welcomed all those in attendance and read the list of apologies.

All paid up full Members and Fellows were sent a copy of the Agenda in the normal way, and were offered a set of accounts.

The first item on the agenda was: To receive and consider the Accounts for the year ended 30th June, 2022, together with the report of the Directors and Auditors thereon.

This was proposed by Ben Studdy, seconded by Will Dando and agreed by a majority.

The second item on the agenda was to elect three members to the Council of Management. Colin Day, Malcolm Sharp and Ben Studdy resigned in accordance with Article 47 and, being eligible, offered themselves for re-election in accordance with Article 48.

In addition, nominations were received for Colin Jenkinson, Alex Kemsley and Shaun Keay to serve on the Council of Management.

Council decided to increase the number of Council members from twelve to fifteen, so it was therefore proposed, as a composite motion: To elect Colin Day, Malcolm Sharp, Ben Studdy, Colin Jenkinson, Alex Kemsley and Shaun Keay to the Council of Management.

This was proposed by Ian Betts, seconded by Will Dando and agreed by a majority.

The third and final item on the agenda was to re-appoint Lanham and Company as Auditors to the Company and to authorise the Directors to fix their remuneration.

This was proposed by Ben Studdy, seconded by Malcolm Sharp and agreed by a majority.

There being no further business to discuss, Jimmy thanked everyone for attending and closed the meeting at 9.42 a.m.

support@lovibond.uk • 01980 664800 • www.lovibond.com

Water Testing Made Easy



Test Kits for the Engineer

The Lovibond® range of comparator and photometer kits enable you to measure the essential pool tests quickly and most importantly accurate. Poor water quality can not only be dangerous for the user but can also damage fixtures and fittings. If you are responsible you need to know the results you have are correct for peace of mind - use Lovibond® kits.

Test Kits for the Pool Owner

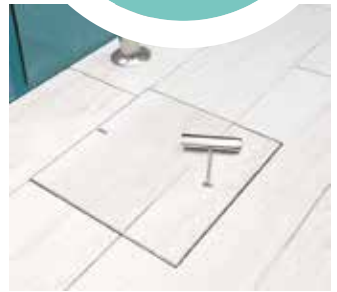
The perfect water testing kits for the pool owner. Using established tablet based kits as used by the professionals our Lovibond® test kits are designed to give easy to read and accurate results to ensure maximum control and safety of your pool water.

Introducing Skimmer Lids from HIDE – the world’s first dual-inlay lid system



**Seamless
Integrated
Pattern!**

H HIDE



HIDE's fully customisable inlay system allows you to add your material into the cover, as well as any combination creating a seamless and sophisticated upmarket finish.

HIDE covers can carry any selection of stone, tiles, timber, artificial grass, paver or concrete to match the surrounding landscape of your pool and patio.

Manufactured from solid 316L marine-grade stainless steel, HIDE covers stand the test of time.

See online for more info.

EXCEPTIONAL SERVICE, QUALITY PRODUCTS



14 Hanborough Business Park, Long Hanborough, Oxfordshire, OX29 8LH, UK
T: 01865 988346 | **E:** info@fairlocks.co.uk | **W:** www.fairlocks.co.uk



Correction and Clarification

In the last issue of the ISPE Magazine, October 2022, Vol. 33 no. 3, we included an article on page 10 by Howard Gosling, FISPE, entitled 'New Law - Be Aware'. Following publication, concern was raised over the phrase "the illegality of selling 14/15% w/w to members of the public".

Howard has stated that he could have put more detail into that phrase but was trying to encourage people to read the Statutory Guidance:

<https://www.gov.uk/government/publications/the-offensive-weapons-act-2019/statutory-guidance-offensive-weapons-act-2019-accessible-version>

That is where the detail appears which covers the keeping of the products securely and for example includes the requirement not to sell any of the products listed in the table to anyone aged under 18, or to leave products unattended on a site but to follow the correct procedures throughout. Moreover, there is a requirement for an additional label stating that, rather like with alcoholic drinks, the product should not be sold to anyone under the age of 18.

A separate query has been raised about the safety of day tanks with 14/15% hypochlorite in them on residential premises accessible to the public and we are currently awaiting a response from the Home Office.

One problem is that it is difficult to consider both knives and chemicals as Offensive Weapons and many DGSA's are not aware of this legislation, let alone the ever growing 1972 Poisons Act and Explosive Precursors.

As soon as we get some further clarification from the Home Office, more details will be published but, in the meantime, everyone who handles Dangerous Goods, BY LAW, does need training, appropriate to their duties!! It is a Legal Requirement.

SPATA have published a factsheet on this topic where a number of questions are answered, 'Offensive Weapons Act (M121)'. Contact SPATA for more details (01264 356210).

Editorial

Well here we are again, tucked away on the back page, such was the amount of product/project profiles and other articles we received, which we hope you find of interest.

Anyone who has sent items in for publication should not feel their efforts were in vain as the next issue of the ISPE Magazine will be out in early April and will feature more reports from recent seminars, for example.

The ISPE Workshop programme for SPATEX 2023 is now complete and this may be found on the SPATEX website - www.spatex.co.uk. All Workshops are free-to-enter and cover a wide variety of non-product-specific subjects, as well as providing a CPD/Attendance certificate (after the event).

The next ISPE One-Day Seminar, (our 128th) will be at the Hilton Hotel, Cobham, Surrey on Thursday 9th March, looking at Filtration, pipework sizing and head losses, etc., Filter media (including spa filters) and Auto-dosing, including the effect variable speed pumps have on the dosing equipment. The programme is being finalised and will be sent to all members in addition to being available on the ISPE website under diary dates.

The ISPE Student exams will be on Tuesday 14th March, in Cobham, Surrey, once again, and letters with booking forms will be sent to all ISPE students in January. Contact us if you have not received one!

Space precludes us from including the usual situations vacant summaries here but please see the ISPE website (www.ispe.co.uk) for the full adverts or contact us in the ISPE office for details. A list of new members and students will appear in the next issue, too.

We hope to see many of you at SPATEX or the ISPE Seminar and hope you all have a successful start to the season. In the meantime, keep busy!

Ross Alcock - January 2023.



Turn any pool into an **Endless Pool**

with the Fastlane Swimming
Machine from Certikin



The Fastlane Swimming Machine produces a smooth, quiet, powerful current that's perfect for any pool and has a top speed of 1min 10sec for 100m.

Now you can turn any pool into an Endless Pool!

- Highest quality swim current
- Simple to use, economical to run
- Deck mount for existing pools
- Fun for the entire family
- Low impact exercise
- Wall mount for new construction

Add the Endless Pools Fit@Home® App to take workouts to the next level.

The app lets customers control the Fastlane Pro or Hydrostride from any smart device.

Change the speed and duration, use it as an easy-to-read display, or program advanced, multispeed 'interval' workouts.



SPATEX

THE POOL, SPA & WELLNESS SHOW

TUESDAY 31 JAN - THURSDAY 2 FEB 2023

FOR MORE INFORMATION AND
TO REGISTER FOR FREE VISIT:

WWW.SPATEX.CO.UK OR
CALL +44 (0)1264 358558

SPATEX represents all sectors of the water leisure industry from pools, spas, saunas to hydrotherapy, steam rooms and play equipment, in both the domestic and commercial arena.

POOLS



SPAS

WELLNESS



AND MORE

COVENTRY BUILDING SOCIETY ARENA • COVENTRY • UK